

DTH HAMMER 15"

DESCO INC. is at your solution and service.

Desco Inc.(HQ/Manufacturer)

HEAD OFFICE: 1240-1, Ok-Dong, Gwangsan, Gwangju, Korea

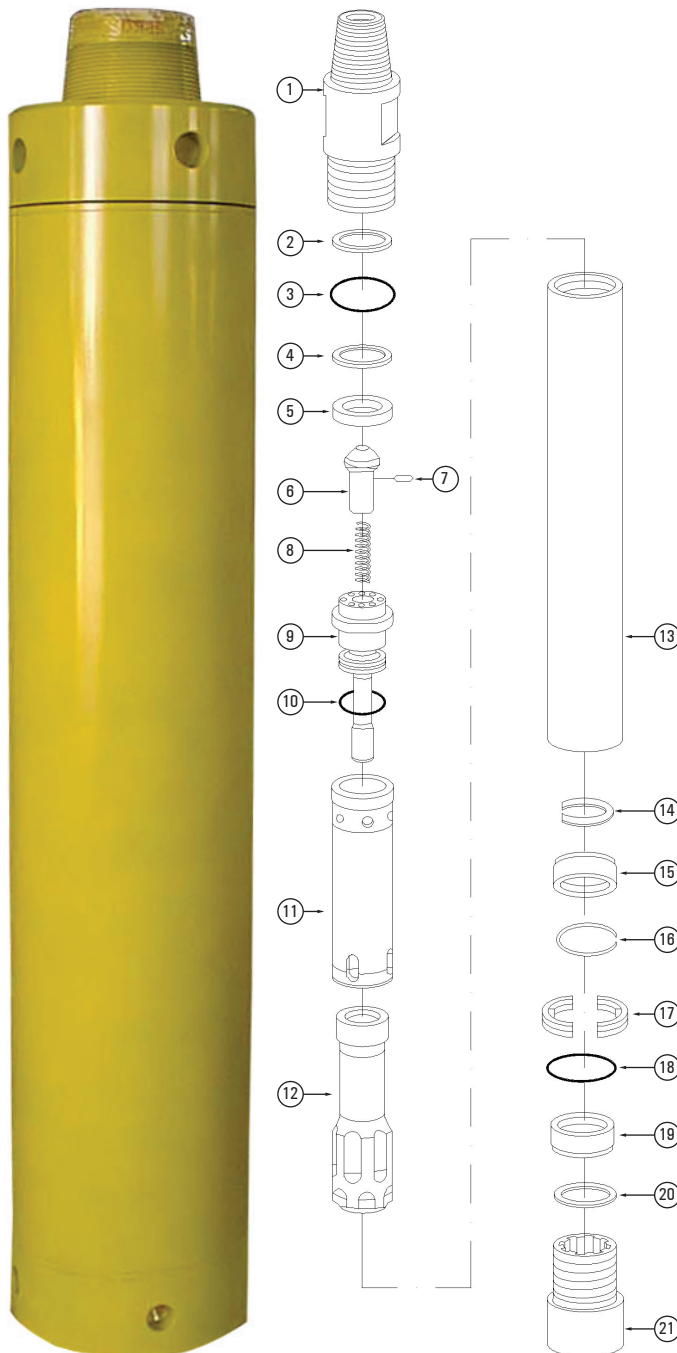
TEL : 82.62.952.4564 / FAX : 82.62.953.1593

EXPORT DIVISION

2607 jidong, Lottecastle, 76, Soongin-Dong, Jongno-Gu, Seoul, Korea

TEL : 82-2-3670 6400 / FAX : 82-2-3670 6399

E-mail : desco@desco-inc.com



MODEL ACE380 SHANK TYPE SD15

No	Part Name	Part No
1	Back head	15A-01
2	Washer (upper)	15A-02-1
3	B.H. O-ring	15A-01-1
4	Space ring	15A-03-1
5	Make-up ring (urethane)	15A-04-1
6	Check valve	15A-06
7	Chock	15A-06-1
8	C.V spring	15A-06-1
9	Air distributor	15A-08
10	A.D. O-ring	15A-08-1
11	Inner cylinder	15A-10
12	Piston	15A-11
13	Case	15A-12
14	Piston retainer ring	15A-11-1
15	Bearing (upper)	15A-14
16	Bearing retainer ring	15A-14-1
17	Bit. retainer ring	15A-19
18	Bit. ret. O-ring	15A-19-1
19	Bearing (lower)	15A-15
20	Washer (lower)	15A-02-2
21	Chuck	15A-20

SPECIFICATION

DTH Hammer	15" Hammer
Backhead Thread	API 8*5/8 REG. Pin Hex. Joint - H120
Length	1,660mm
Outside Diameter	Dia. 376mm
Weight	1,140kg
Shank Type	SD15

AIR CONSUMPTION CHART

150 PSI (10.5bar)	1890CFM
250 PSI (14bar)	3600CFM

Notice

The specification & drawing is based on IR shank.
So, Inner parts & specification can be different as the type of the other shanks.